



# NIHIWATU

SUMBA ISLAND

[WWW.NIHIWATU.COM](http://WWW.NIHIWATU.COM)





# NIHIWATU

## FACT SHEET

**33**  
VILLAS

with 38 rooms in a 1, 2, 3, 4 or 5 bed-room layout, all with private pool.

**2.5**  
KILOMETRES

is the length of the private beach on which Nihiwatu is located, within 567 acres of unspoilt, natural reserve.

**90**  
PERCENT

of the work force at Nihiwatu is made up of local Sumbanese (total of 280 staff).

**2016**  
AWARDS

**T+L #1 HOTEL IN THE WORLD**  
Pure 2015 Winner Design of the Year  
Condé Nast Traveler The World's Best  
Hotels Gold List 2016

## INCLUSIONS

- 3 meals daily, including snacks
- Non-alcoholic drinks in all outlets
- Minibar, WI-FI, In-room electronic safe
- Laundry
- Air-conditioning, ceiling fans, hairdryer

## GUEST SERVICES

- Butler service
- Private in-villa dining
- Domestic flight arrangements
- Bali & Sumba airport transfers
- Babysitting services
- Destination dining and off-site meals at extra charge
- Multilingual hotel staff  
(German, Spanish, Portuguese, Swedish,  
Montenegrin spoken)





# THE VILLAS

- Exclusive buy-out of the entire resort is possible with minimum booking of 7 nights of all villas. Total number of persons which can be accommodated is 80.
- Small, private open-aired meetings & incentives, are also feasible by secluding parts of the resort for private groups.

## KASAMBI, WAMORO AND LANTORO

- 6 residences of 1 bedroom villas, most with a private pool, outdoor shower (no bathtub), 4 king bed, 2 twin bed.
- 3 residences of 2 bedroom villas or 4 bedroom Estates if joined with 1 bedroom villas.

## KANATAR

- 1 residence of 1 ½ bedrooms in duplex Sumba house.
- 1 residence of 1 bedroom Sumba house.

## LAMBA

- 2 residences of wave front 1 bedroom villas.

## LULU AMAHU

- 2 residences of 1 bedroom and family villas.

## TREE HOUSE (MAMOLE)

- One 3 bedroom villa.

## MARANGGA

- 4 residences of 1 bedroom Honeymoon villas with cliff top bales.

## PUNCAK

- One 3 bedroom villa.

## RAJA MENDAKA RESIDENCE

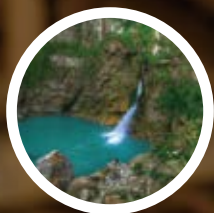
- The resort's largest estate, a 5 bedroom residence which can also be reserved as 2, 3, 4 or 6 bedroom configuration.
- 19m lap pool, iced plunge pool and butler accommodation.

## HAWERI

- 5 bedroom residence which can also be reserved as 1, 2, 3, 4 or 5 bedroom configuration







## THE EXPERIENCE

### BY SEA

Surfing, snorkeling, ocean and river SUP, free diving, spearfishing, deep-sea and FAD fishing, ocean and river kayaking, boogie boards, wakeboarding, "Surfaris".



### ON LAND

Scenic excursion by hiking, mountain biking, horse riding or open-air Land Rover Safari. Visit the local villages and markets to see the exquisite Ikat weavings, local arts & crafts or monumental megalithic burial sites.



### WELLBEING

A full range of spa treatments, including massage, Manicure and pedicure, are available at the Boat House or in-room. Daily complimentary Yoga sessions are available at the Yoga Pavilion.



### NIHIOKA

The "Spa Safari" experience at the neighbouring valley, offering breakfast, lunch and full day unlimited spa treatments in 4 cliff top bamboo "Bales" overlooking two private beach coves and cascading rice paddy fields.



### CHRIS & CHARLY'S CHOCOLATE FACTORY

We have our own chocolate tour the factory every day from 10am to 4pm and partake in the chocolate making from 12-3pm!

Aside from the actual factory itself, this haven of fun, tucked in the shade by the creek on the way to the Stables, will keep the little ones busy and fulfilled daily.

Ask our team for more kids activities

## THE RESTAURANTS

All dining venues offer a la carte menus and seating is at individual tables. Special events, two times weekly, are served and seated in family style tradition.

Exceptional private dining experiences and events including BBQ, romantic dining and movie nights. For special occasions, themed nights are organized: Sumba White Nights Party, Jungle Party or full-moon parties.

### OMBAK

The main sandy-floored restaurant and bar, serving daily a la carte breakfast and dinner with choice of Indonesian or International cuisine.

### NIO BEACH CLUB & POOL

Featuring a state-of-the-art resort lap pool, Nio Beach Club is open for lunch daily, serving grilled "catch of the day", BBQ, salads and pizza from our large wood oven.

### BOAT HOUSE

The sunset meeting point. Snacks throughout the day are served along with fresh coconuts, juices or cocktails, all days with a la carte menu.

### MENARA

Boasting the tallest Sumbanese roof on the island, the resort's living room and recreation area comes complete with a pool table, table tennis and dartboard as well as a library, adjoining a sandy-floored, open air movie theatre showing daily films and live TV broadcasts.





# OUR RESORT MAP





# FACTS ABOUT SUMBA



## DRY SEASON

April to November



## GREEN SEASON

December to March



## HEALTH AND SAFETY

85% Malaria-free island but we do take precautions by regularly fogging the resort. All villas come with mosquito nets and we provide mosquito repellent in all rooms. Check with your GP if you want to take prophylactics. Local clinics are available and a local hospital is approx. 45-min drive away. Ensure you are up to date with all your vaccines.



## CURRENCY

Currency is Indonesian Rupiah. There are no ATM's on the island. For local purchases, gratuities or market visits, bring local currency when you transit in Bali. Cash paid-out available at resort against a nominal bank fee. Credit cards can be used upon check-out for all on-site purchases at the bar, boutique and activities



## DRESS CODE

Casual beach wear is best for the day: T-shirts, loose lightweight long or short sleeve shirts and lightweight shorts or pants, hat and sandals. For the evening, casual chic is endeavored. Comfortable walking or hiking shoes are also recommended. When visiting local villages, appropriate attire would be a shirt or T-shirt that covers the shoulders with bermudas or a sarong.



## GURU PROGRAMMES

Open to host experts in the medical, photography, sports, meditation, culinary, coaching, agricultural industries to stay at resort for 2 weeks – 1 month and give back to the staff and local community contra room & board.



## PHILANTHROPY

The **Sumba Foundation**, funded by profits from Nihiwatu and dedicated individual benefactors, supports medical clinics, schools, and communal farms.

# HOW TO GET HERE



## FLIGHTS

Nihiwatu's Bali office can assist in arranging domestic flights and ticketing between Denpasar (DPS), Bali and Sumba's Tambolaka (TMC) airport. There is a second airport, Waingapu, 5 hrs drive from Nihiwatu in East Sumba.

## TRANSFERS

Private road transfers from Tambolaka airport to Nihiwatu take approx. 90 minutes.

## DEPARTURE TAX

If return flights from Bali to Sumba are booked via Nihiwatu, all domestic airport taxes are included in the rate.

## VISA REQUIREMENTS

Most visitors (including citizens of USA, Canada, UK, Europe, Australia, New Zealand, China, and India) are eligible for an Indonesian visa on arrival. If not eligible for visa on arrival you can apply at any Indonesia Embassy. Visa is charged with US\$35 per person for max. 30 days stay.

Passports must be valid for min 6 remaining months, one full clean page for visa on arrival stamp. Guests will be denied access to board the plane in departing country if this is not adhered to.

## NIHIWATU BALI OFFICE

Kuta PoLeng Complex Block C/2 - Kuta 80361 Bali, Indonesia  
Tel: (+62) 361 757 149 • Fax: (+62) 361 755 259 • [info@nihiwatu.com](mailto:info@nihiwatu.com)